

The End

The road of life has it an end
Nearly there, no another bend
Mind that road, it's busy to cross
"Take care now mind", shouts the boss

Now then there's rail
On a platform to greet
Why goes the tale
Do tracks never meet?

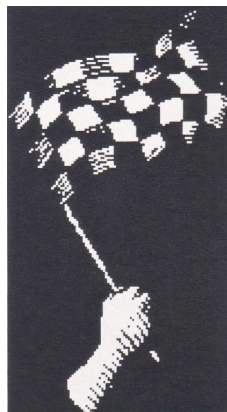
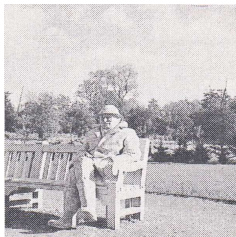
It's such a long way
It the heat of the day
Come travel up north, great place to stay
No wage no fear, nothing to pay

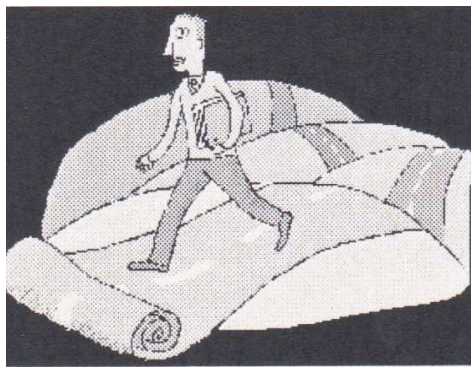
It's a long way from there to here
A never ending road, to whistle and cheer
Mind the toad, he needs to cross
Some bloody drivers don't give a toss

It's the road to nowhere
At the map let's stare
Ah journey's end just up this hill
Oh no it's not It's further still

When will it ever end?
It's driving me round the bend
It's a beauty, such is life
It's a passion, not strife

Live and let live
Forget and forgive
Never a hurdle, just a bend
No fear, no worries, it's just
The End





The End